

Statit External Data Sources

Creating ODBC data sources

Dustin Richardson
Solutions Educator



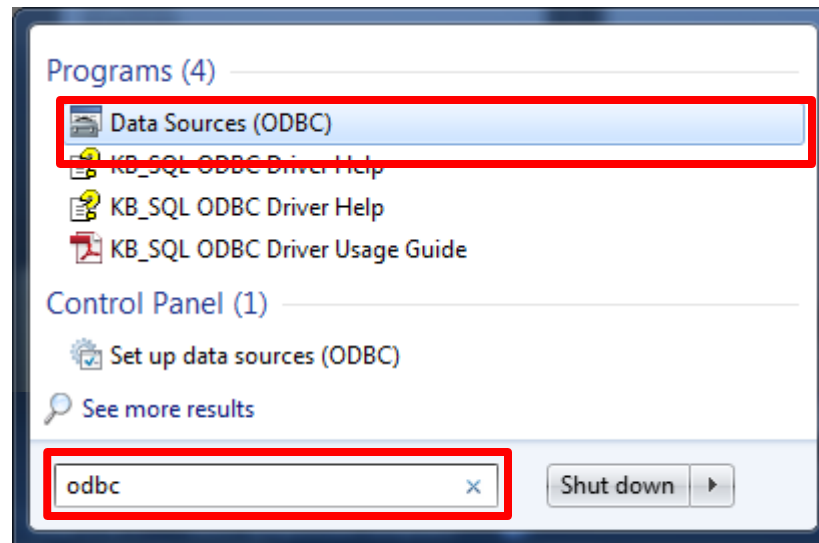
2015 Midas+ Annual Symposium
"Insight-Driven Transformation"



ODBC Server Configuration

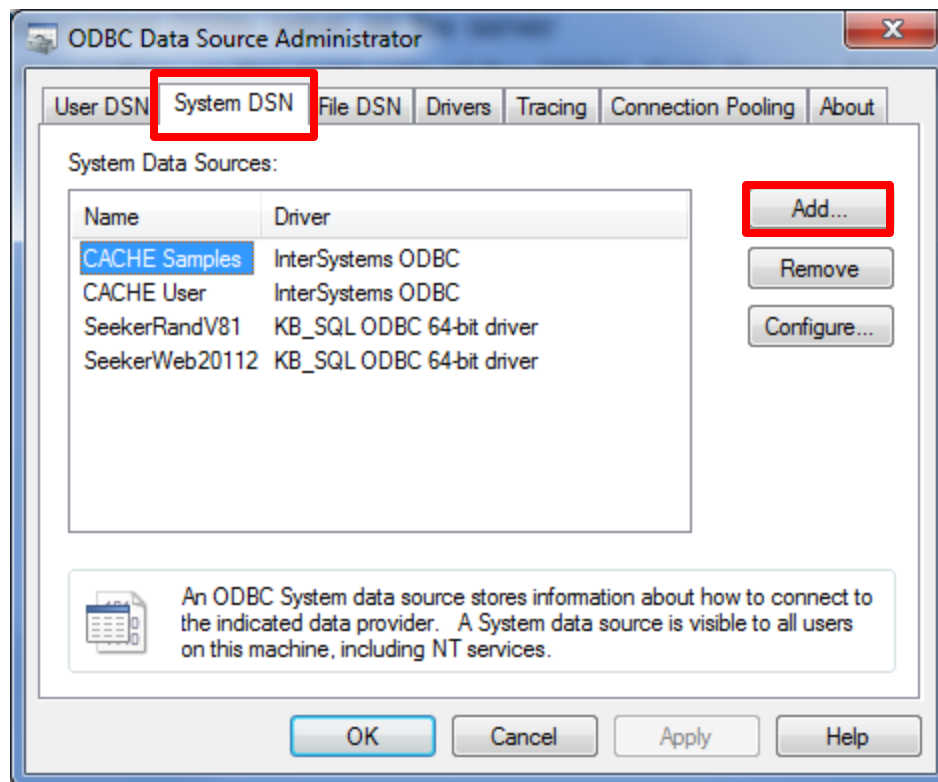
- Access the Data Sources (ODBC) utility
 - Click Start
 - Type ODBC in the search field
 - Select the 32-bit utility

(Note: not all workstations have 32-bit and 64-bit ODBC utilities. If there is only one, select it).



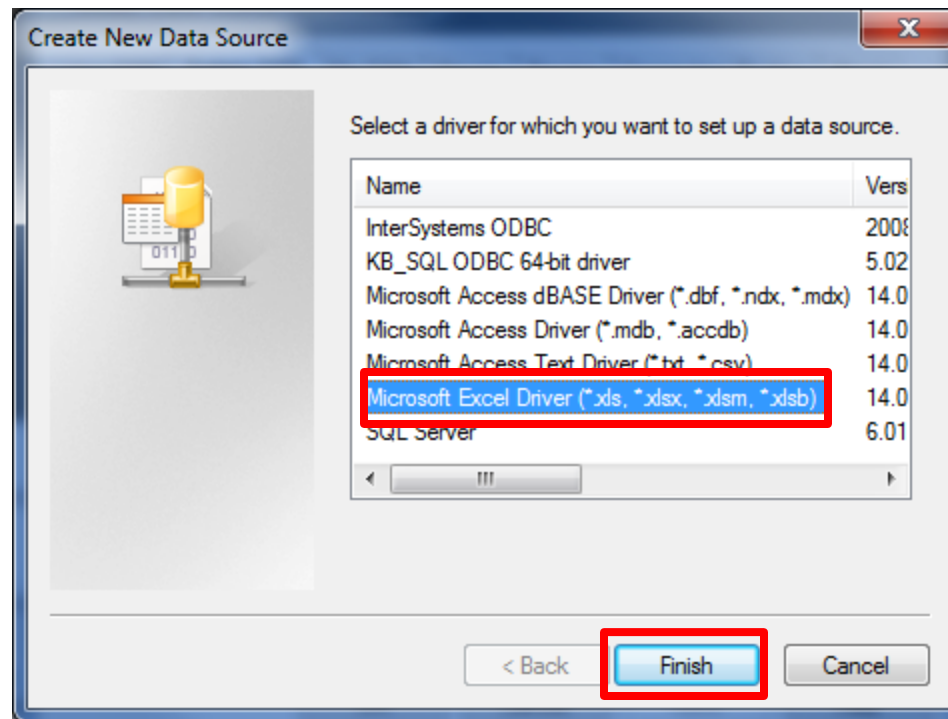
ODBC Server Configuration (...continued)

- Navigate to the System DSN tab
 - Review the current DSNs setup on the server
 - Click the Add button on the right side of the ODBC Data Source Administrator window.



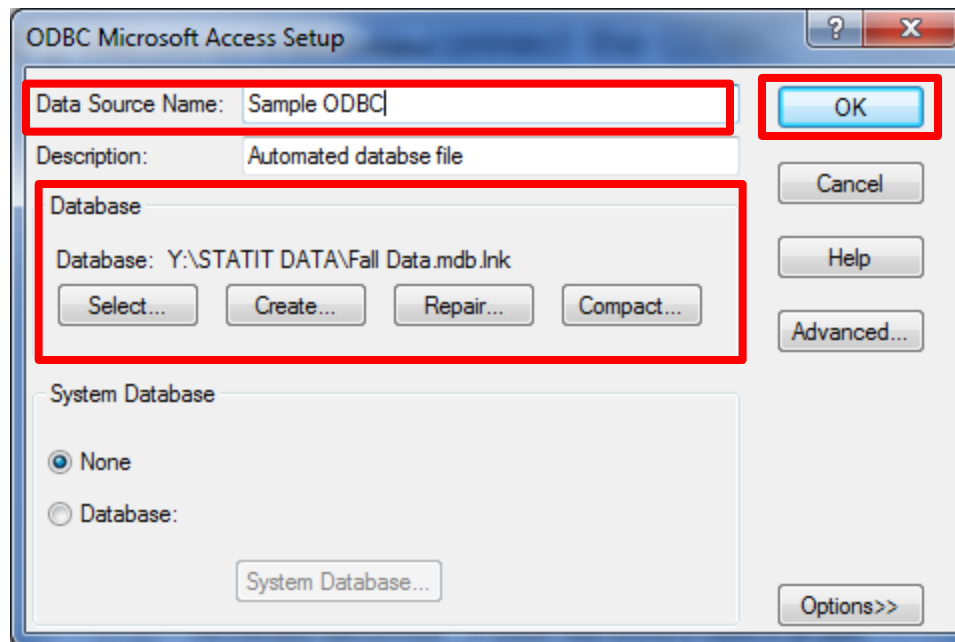
ODBC Server Configuration (...continued)

- Select the type of ODBC to create
- Click Finish



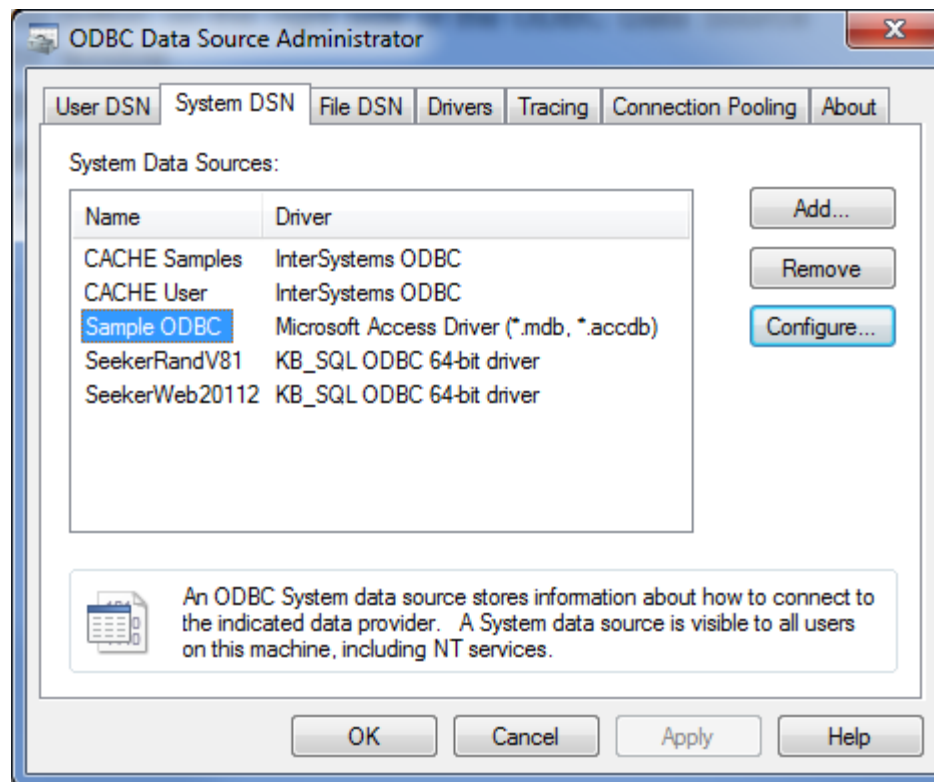
Configuration (...continued)

- Name the data source
- Complete the required fields to connect the ODBC
- Click OK



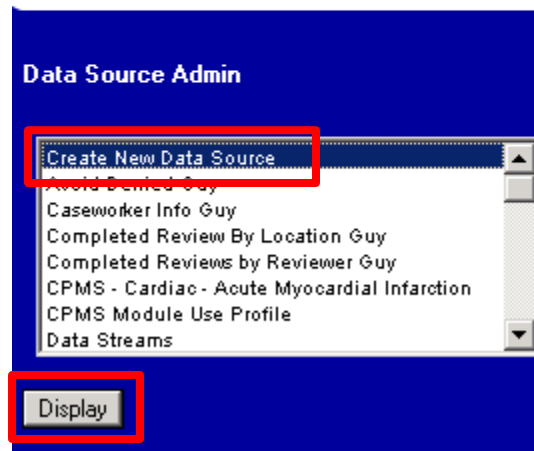
ODBC Server Configuration (...continued)

- Click OK



ODBC Statit Configuration (...continued)

- Navigate to PPR Admin > Data Source Admin
- Create New Data Source > Display



ODBC Statit Configuration (...continued)

- Complete all of the required data source fields for the Source Type of DSN
- Select the Table to serve as the data source.
- Click Create

New Data Source

General

Data Source Name	<input type="text" value="Sample ODBC"/> *
Source Type	<input type="text" value="DSN"/> *
DSN Name	<input type="text" value="Sample ODBC"/> *
User ID	<input type="text"/>
Password	<input type="text"/> <input type="button" value="Connect"/>
Table	<input type="text" value="LOS"/> *
Restrict Data Read	<input type="checkbox"/>
<input type="button" value="Create"/> <input type="button" value="Cancel"/> <input type="button" value="Help"/>	

* - Required Field

You're done!

You can now build Indicators from the tables available in the DSN data source!